



# Sepson S22K

## A Side Puller for Stable Reach

**ASK US ABOUT  
SNATCH BLOCKS  
+ OTHER WAYS  
TO ACCESSORIZE.**

**Common Specifications**

|                          |                  |
|--------------------------|------------------|
| Max Pulling Force        |                  |
| <i>Bottom Rope Layer</i> | 22,000 lbs       |
| <i>Top Rope Layer</i>    | 15,600 lbs       |
| Max Rope Speed           |                  |
| <i>Bottom Rope Layer</i> | 20 ft/min        |
| <i>Top Rope Layer</i>    | 28 ft/min        |
| Max Oil Pressure         | 2,500 psi        |
| Max Oil Flow             | 16 gpm           |
| Rope Drum Diameter       | 10.12"           |
| Rope Diameter            | 9/16"            |
| D/d                      | 19.3:1           |
| No of Rope Layers        | 5                |
| Rope L / Wt              | 200 ft / 105 lbs |
| Winch Wt                 | 470 lbs          |

| Model Variations | S22K      | Free Spool | Overwound | Left Hand | Right Hand |
|------------------|-----------|------------|-----------|-----------|------------|
|                  | 6331-189  | Pneumatic  |           | X         |            |
| 6331-190         | Pneumatic |            | X         | X         |            |



**MILITARY GRADE  
WINCHES FOR YOUR  
TOW EQUIPMENT**

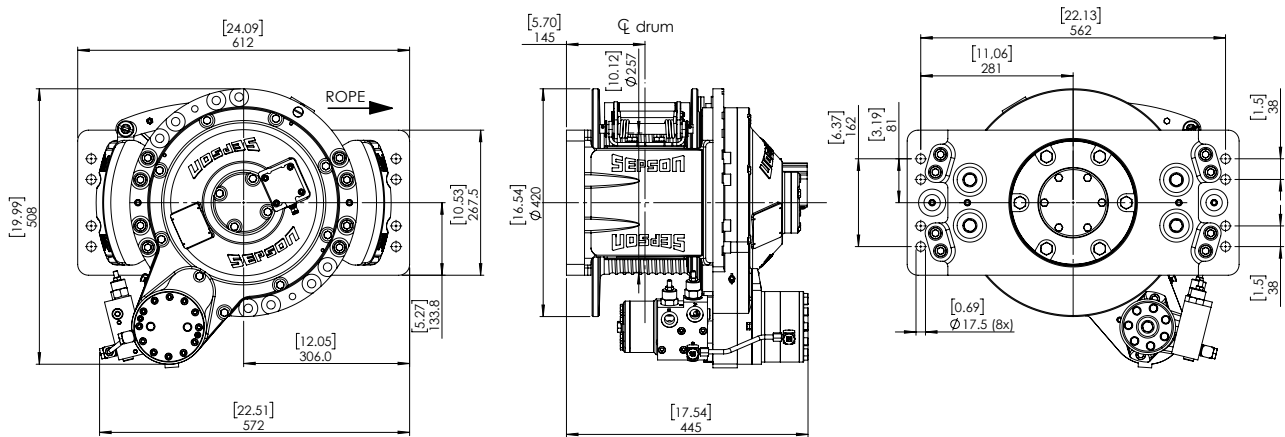


@sepson\_usa

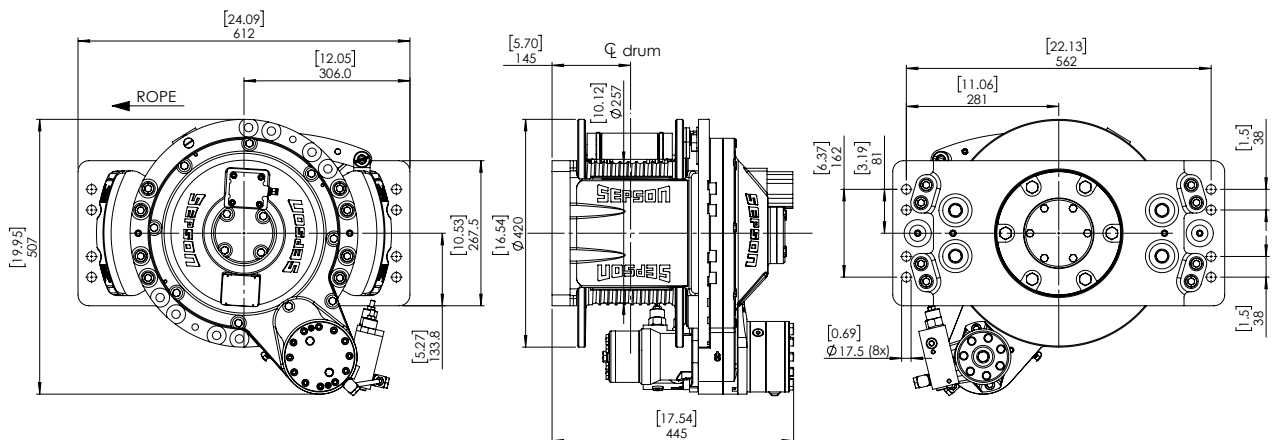
sepson-usa.com

412.212.6769

Overwind Left Hand Model



Overwind Right Hand Model



Compliant to SAE J706

### SEPSON WINCHES

- + Built to military standards for commercial towing
- + Highest caliber durability
- + Compact designs for side-by-side fitting and more narrow footprints

Reliable, dependable, uncomplicated, and safer.

*Learn more about how, together, Sepson and Vime Winch Lines offer tow operators more power and more flexibility.*