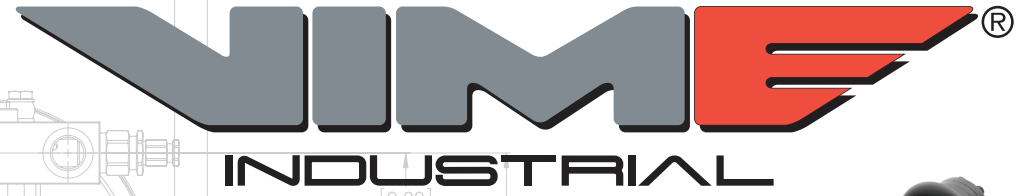


## COMMERCIAL TOWING + RECOVERY

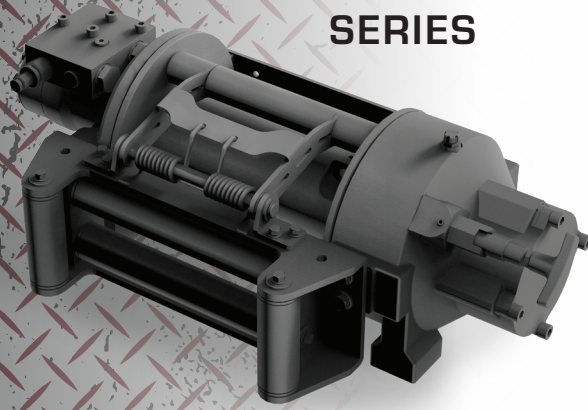
Light Duty

Medium Duty

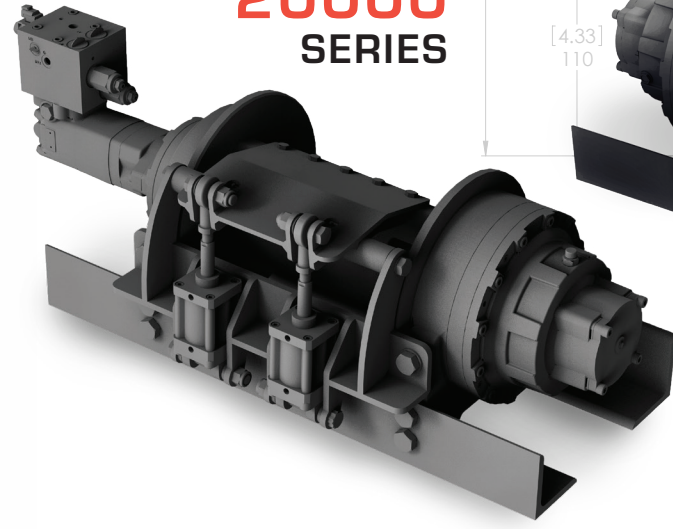
Heavy Duty



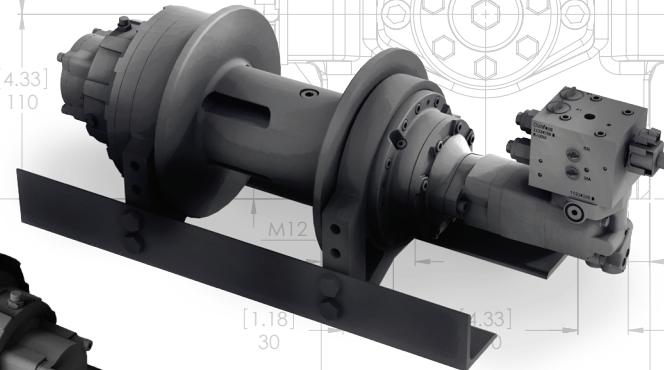
**EPHL  
8000  
SERIES**



**EPHC  
20000  
SERIES**



**EPHL  
30000  
SERIES**



**EPH  
12000  
SERIES**



**JHM  
8000  
SERIES**



### TECHNICAL DATA

	JHM 8000	EPH 8000 HB	EPH 8000 MB	EPHL 8000 HB	EPHL 8000 MB	EPH 10000 HB	EPH 10000 MB	EPH 12000 HB	EPH 12000 MB	EPHC 20000 HB	EPHL 20000 HB	EPHC 30000 HB	EPHL 30000 HB
Pulling Capacity Bottom Rope Layer (lbs.)	8,000	8,000	8,000	8,000	8,000	10,000	10,000	12,000	12,000	20,000	20,000	30,000	30,000
Pulling Capacity Top Rope Layer (lbs.)	4,960	5,168	5,168	5,168	5,168	6,263	6,263	7,253	7,253	12,222	12,222	19,489	19,489
Max Oil Pressure (Psi)	2,031	2,321	2,321	2,321	2,321	2,176	2,176	2,176	2,176	3,000	3,000	2,900	2,900
Max Oil Flow (GPM)	10.6	15.85	15.85	15.85	15.85	15.85	15.85	15.85	15.85	19.81	19.81	19.81	19.81
Rope Diameter (inches)	3/8	3/8	3/8	3/8	3/8	7/16	7/16	7/16	7/16	9/16	9/16	5/8	5/8
Rope Length (feet)	105	108	108	141	141	131	131	177	177	164	262	131	197
Line Speed (feet/min)													
Single Speed: Bottom Layer	16.4	48	48	48	48	38	38	28	28	36	36	22	22
Single Speed: Top Layer	26.2	75	75	75	75	61	61	50	50	61	61	34	34
2-Speed: Bottom Layer	–	–	–	–	–	–	–	–	–	73	73	45	45
2-Speed: Top Layer	–	–	–	–	–	–	–	–	–	122	122	69	69
Brake Mechanism: Manual (M) or Hydraulic (H)	–	H	M	H	M	H	M	H	M	H	H	H	H
Free Spool: Manual (M) or Pneumatic (P)	M or P	M or P	M or P	M or P	M or P	M or P	M or P	M or P	M or P	M or P	M or P	M or P	M or P

**RETROFITTABLE MODELS AND CONFIGURATIONS TO MEET YOUR SPECS AND UPGRADE YOUR FLEET.**