

TECHNICAL DATA

See reverse for
Technical Drawings

Built to be

Rotator Ready

Common Specifications

Freespool clutch	Pneumatic
Max. pulling force in low speed mode	
<i>Bottom rope layer</i>	50,000 lbs
<i>Top rope layer</i>	35,700 lbs
Max. rope speed in low speed mode	
<i>Bottom rope layer</i>	10 ft/min
<i>Top rope layer</i>	17 ft/min
Max. rope speed in high speed mode	
<i>Bottom rope layer</i>	36 ft/min
<i>Top rope layer</i>	55 ft/min
Max. oil pressure	2,600 psi
Max. oil flow	20 GPM
Rope drum diameter (inner)	10.4"
Rope diameter	3/4"
D/d	14.9:1
Rope MBL (EN 14492-1)	≥ 100,000 lbs
Number of rope layers	4
Rope length	200 ft
Rope weight	287 lbs
Winch weight	1070 lbs

Model Variations

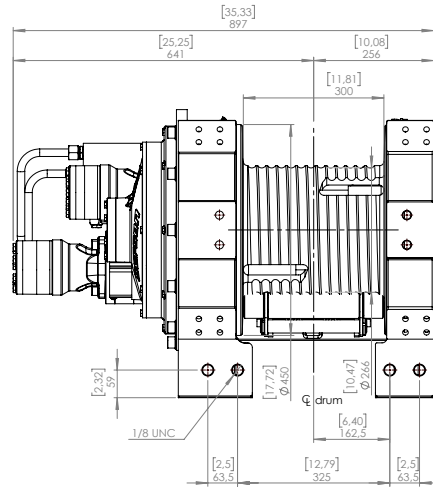
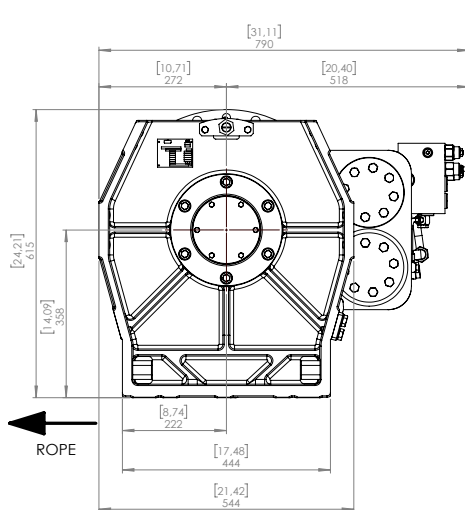
	#6334-127 H50K for 3/4" ROPE	#6334-128 H50K for 3/4" ROPE	#6334-129 H50K for 3/4" ROPE	#6334-130 H50K for 3/4" ROPE
Under wound			X	X
Over wound	X	X		
Left hand	X		X	
Right hand		X		X

**MILITARY GRADE
WINCHES FOR YOUR
TOW EQUIPMENT**

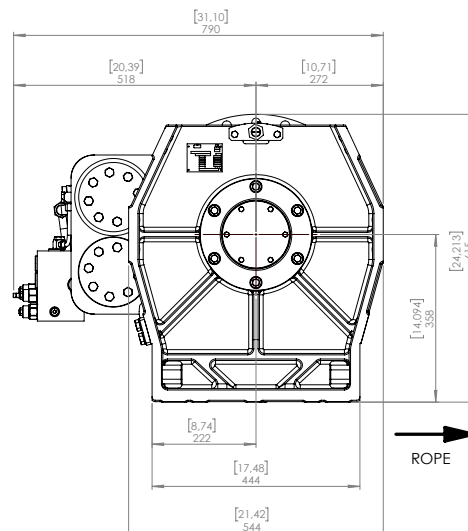
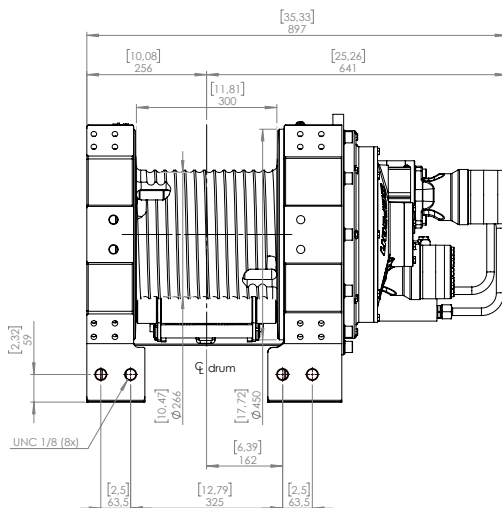
Reliable, dependable, uncomplicated, and safer.

412.444.5409

UNDER WOUND LEFT HAND MODEL



UNDER WOUND RIGHT HAND MODEL



See website for additional model diagrams.

Compliant to EN 14492-1

**MILITARY GRADE
WINCHES FOR YOUR
TOW EQUIPMENT**

Reliable, dependable, uncomplicated, and safer.

412.444.5409

www.sepson-usa.com

facebook.com/sepsonusa

@sepson_usa