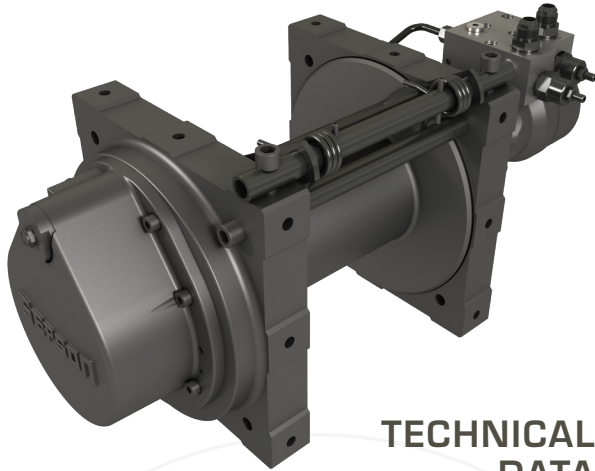




# SEPDURANCE H20K



Available in

## Multiple Drum Widths

### TECHNICAL DATA

See reverse for  
Technical Drawings

#### Common Specifications

Max. pulling force	
<i>Bottom rope layer</i>	20,000 lbs
<i>Top rope layer</i>	12,600 lbs

Max. rope speed	
<i>Bottom rope layer</i>	20 ft/min
<i>Top rope layer</i>	32 ft/min

Maximum oil pressure	2,900 psi
Maximum oil flow	16 GPM

Rope drum diameter	5"
Rope diameter	$\frac{9}{16}$ "
Rope MBL (EN 14492-1)	≥ 40,000 lbs
Number of rope layers	4

Model Variations	Freespool clutch	#7308-013 H20K STD DRUM PNEUMATIC	#7308-014 H20K EXT DRUM PNEUMATIC	#7308-017 H20K STD DRUM MANUAL	#7308-018 H20K EXT DRUM MANUAL
		100 ft	130 ft	100 ft	130 ft
		55 lbs	77 lbs	55 lbs	77 lbs
		177 lbs	185 lbs	177 lbs	185 lbs

**MILITARY GRADE  
WINCHES FOR YOUR  
TOW EQUIPMENT**

**Reliable, dependable, uncomplicated, and safer.**

**412.444.5409**

[www.sepson-usa.com](http://www.sepson-usa.com)

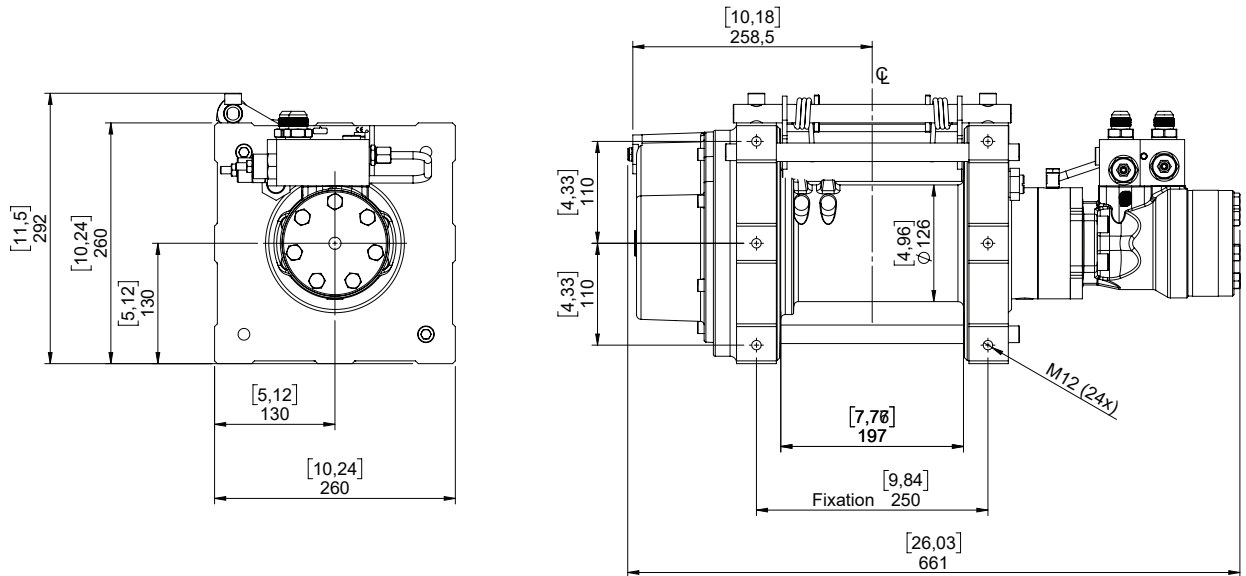


[facebook.com/sepsonusa](https://facebook.com/sepsonusa)

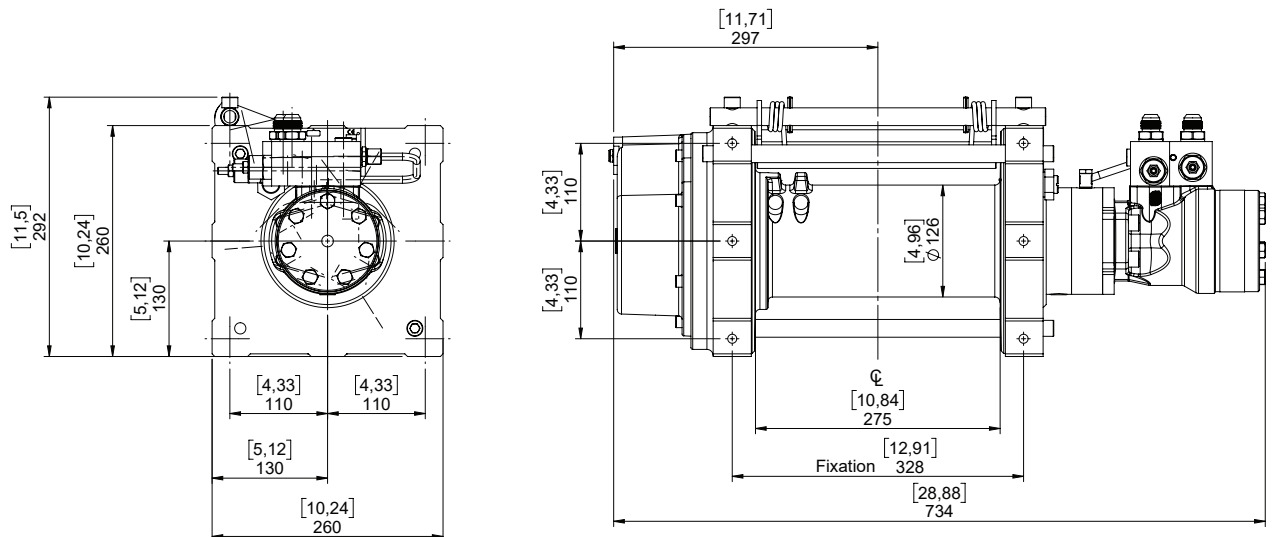


[@sepson\\_usa](https://instagram.com/sepson_usa)

## STANDARD DRUM MODEL



## EXTENDED DRUM MODEL



Compliant to EN 14492-1  
and SAE J706

**MILITARY GRADE  
WINCHES FOR YOUR  
TOW EQUIPMENT**

**Reliable, dependable, uncomplicated, and safer.**

**412.444.5409**

[www.sepson-usa.com](http://www.sepson-usa.com)

[facebook.com/sepsonusa](https://facebook.com/sepsonusa)

[@sepson\\_usa](https://instagram.com/sepson_usa)